

# COSORI

## Original Coffee Warmer & Stainless Steel Coffee Mug Set

Model No.: CO162-CWM



### Questions or Concerns?

Mon - Fri 9:00 AM - 5:00 PM PT

support@cosori.com | (888) 402-1684

## WITH HEARTFELT THANKS

Thank you for purchasing a new **Coffee Warmer & Mug Set** by Cosori. We're looking forward to keeping many cups of coffee warm for you.

Our helpful Customer Support Team is available at **[support@cosori.com](mailto:support@cosori.com)**. We're here to listen to your questions and concerns, or your joy over long-lasting warmth. Happy drinking!

## Table of Contents

Package Contents	3
Specifications	3
Important Safeguards	4
Product Diagram	5
Operation	6
How it Works	7
Care & Maintenance	7
Warranty Information	8
Customer Support	10

## Package Contents

1 x Coffee Warmer
1 x Coffee Mug
1 x AC/DC Adapter
1 x User Manual

## Specifications

### AC/DC Adapter:

<b>Input</b>	AC 100-240V / 50-60Hz
<b>Output</b>	12V, 3A

### Warmer:

<b>Input</b>	DC 12V, 3A
<b>Rate Power</b>	24W
<b>Displayed Temperature Range</b>	77°F-230°F (25°C-110°C)
<b>Beverage Temperature Range:</b>	77°F-158°F (25°C-70°C)
<b>Dimensions (L x W x H)</b>	4.2 x 5.3 x 0.7 in. (107 x 135 x 18 mm)

### Mug:

<b>Capacity</b>	500 mL
<b>Material</b>	Stainless Steel & Silicone

# IMPORTANT SAFEGUARDS

Always follow basic safety precautions when using your coffee warmer and mug.

Read all instructions before using.



## CAUTION!

Please take off lid before drinking from the Cosori mug. The opening in the lid is not for drinking from, but for placing a stirring spoon. **Do not drink from the lid.**

- Be cautious when drinking. If left on the warmer for too long, the mug may be too hot to drink from immediately (varies based on warmer temperature).
- Be extremely cautious when moving cups containing hot liquids, to avoid being burned.
- Do not place stainless steel mug in microwave.
- Be cautious when heating plate is hot.
- To prevent electric shock, **do not** immerse the warmer or AC/DC adapter in water or any other liquid.
- **Do not** allow children to play with the warmer. Closely supervise children who are near the warmer.
- The warmer is not intended for use by persons (including children) with reduced physical, sensory, or mental capabilities, or lack of experience and

knowledge, unless they are supervised or given instruction by a person responsible for their safety.

- Unplug the warmer when not in use.
- Allow the warmer to completely cool down before cleaning or storing.
- **Do not** use the warmer or adapter if they are damaged. Contact Customer Support (page 10).
- **Do not** cook foods on the warmer. The warmer cannot reach safe cooking temperatures.
- **Do not** use the warmer outdoors.
- **Do not** place the warmer near gas or electric burners, or in a heated oven.
- **Do not** let the cord hang over the edge of a table or counter, or near hot surfaces.
- To prevent electric shock, **always** connect the AC/DC adapter to the coffee warmer first, then plug the adapter into a wall outlet.
- Only use the warmer as directed in this manual.

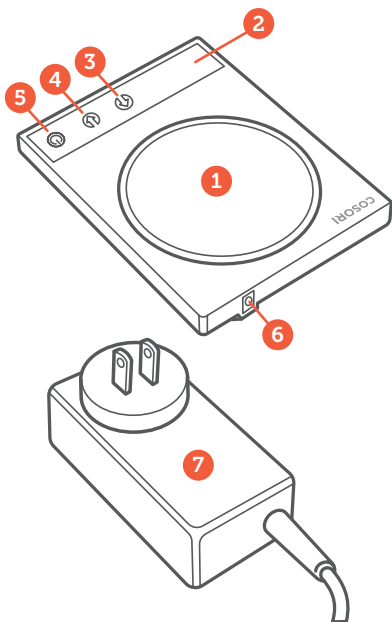
## SAVE THESE INSTRUCTIONS

# PRODUCT DIAGRAM

---

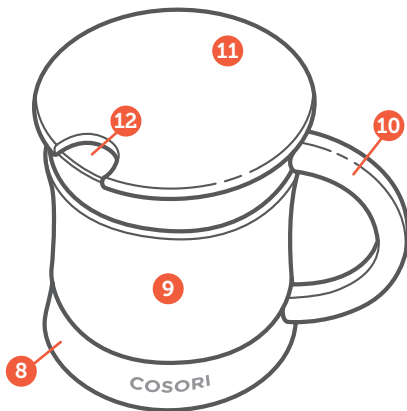
## Warmer:

1. Heating Surface
2. Temperature Display
3. Increase Temperature
4. Decrease Temperature
5. Power Button
6. DC In-Port
7. AC/DC Adapter





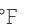


## Mug:

8. Stainless Steel Body
9. Insulated Sleeve
10. Handle
11. Lid
12. Spoon Opening



# OPERATION

---

1. Place your coffee warmer on a flat, level surface.
2. Connect the AC/DC adapter to the DC in-port on the warmer. Plug in the adapter.
3. Press  to turn on the warmer. The display will flash the default temperature (185°F/85°C), and will begin to heat up.
4. (Optional) You can choose a temperature using the  and  buttons, from 77°F-230°F (25°C-110°C). Once you have set the temperature, the display will flash 3 times and the warmer will begin to heat up.
5. (Optional) To change temperature units, press and hold  and  at the same time for 3 seconds. The units will change from "°F" to "°C".
6. Place the coffee mug on the heating surface.

## NOTE:

- Remember to take off the lid before drinking from the Cosori mug. The opening in the lid is not for drinking, but for placing your stirring spoon. **Do not drink from the lid.** [Figure 1.1]
- Be cautious when drinking. If left on the warmer for too long, the mug may be too hot to drink from immediately (varies based on warmer temperature).

## NOTE:

- The temperature on the display shows the temperature of the heating plate, not the actual temperature of the liquid in your cup.
- For best results, we recommend using the Cosori Stainless Steel Coffee Mug. You may also use another heat-safe cup that is thin and has a flat bottom.


7. Press  to turn off your warmer when you are finished.



Figure 1.1

# HOW IT WORKS

---

Because the display temperature shows the temperature of the heating plate (not the temperature of the liquid in your cup), set the display temperature higher than the temperature you want for your drink.

- **Example 1:** If you set the warmer's temperature to 230°F, and pour room temperature water (about 89°F) into the stainless steel mug, after about 2 hours the temperature of the water will reach up to 156°F (actual time will depend on area temperature and amount of liquid).
- **Example 2:** If you set the warmer's temperature to 230°F, and pour hot coffee into the stainless steel mug, the warmer will keep the coffee's temperature at 156°F or higher.

# CARE & MAINTENANCE

---

- Unplug the warmer and allow the heating surface to completely cool before cleaning.
- **Do not** immerse the warmer in water or liquids. *[Figure 2.1]*
- Use a damp cloth to wipe down the surface of the warmer. Dry immediately with a clean, dry cloth.



Figure 2.1

# WARRANTY INFORMATION

---

<b>Product Name</b>	Original Coffee Warmer & Stainless Steel Coffee Mug Set
<b>Model Number</b>	CO162-CWM
<b>Default Warranty Period</b>	1 year
<i>For your own reference, we strongly recommend that you record your order number and date of purchase.</i>	
<b>Date of Purchase</b>	
<b>Order Number</b>	

## TERMS & POLICY

Cosori warrants all products to be of the highest quality in material, craftsmanship, and service, effective from the date of purchase to the end of the warranty period.

Cosori will replace any product found to be defective due to manufacturer flaws based on eligibility. Refunds are available within the first 30 days of purchase. Refunds are only available to the original purchaser of the product. This warranty extends only to personal use and does not extend to any product that has been used for commercial, rental, or any other use in which the product is not intended for. There are no warranties other than the warranties expressly set forth with each product.

This warranty is non-transferrable. Cosori is not responsible in any way for any damages, losses, or inconveniences caused by equipment failure by user negligence, abuse, or use noncompliant with the user manual or any additional safety, use, or warnings included in the product packaging and manual.

### **This warranty does not apply to the following:**

- Damage due to abuse, accident, alteration, misuse, tampering, or vandalism.
- Improper or inadequate maintenance.
- Damage in return transit.
- Unsupervised use by children under 18 years of age.

Cosori and its subsidiaries assume no liability for damage caused by the use of the product other than for its intended use or as instructed in the user manual. Some states do not allow this exclusion or limitation of incidental or consequential losses so the foregoing disclaimer may not apply to you. This warranty gives you specific legal rights and you may also have other rights which may vary from state to state.



**ALL EXPRESSED AND IMPLIED WARRANTIES, INCLUDING THE WARRANTY OF MERCHANTABILITY, ARE LIMITED TO THE PERIOD OF THE LIMITED WARRANTY.**

**Additional 1-Year Warranty**

You can extend your 1-year warranty by an additional year. Log onto

**www.cosori.com/warranty** and enter your order number (e.g., from Amazon or Houzz) within the first 14 days of your purchase to register your new product for the extended warranty.

If you are unable to provide the order number for your product, please type a short note in the order number field along with the date you received your product.

**Defective Products & Returns**

Should your product prove defective within the specified warranty period, please contact Customer Support via

**support@cosori.com** with your order number. **DO NOT** dispose of your product before contacting us. Once our Customer Support Team has approved your request, please return the unit with a copy of the invoice and your order number.

# CUSTOMER SUPPORT

---

If you encounter any issues or have any questions regarding your new product, please contact our helpful Customer Support Team. Your satisfaction is our goal!

## Customer Support

### **Arovast Corporation**

1202 N. Miller St., Suite A  
Anaheim, CA 92806

**Email:** [support@cosori.com](mailto:support@cosori.com)

**Toll-Free:** (888) 402-1684

## Support Hours

Monday - Friday  
9:00 am - 5:00 pm PT

\* Please have your order confirmation number ready before contacting Customer Support.

# SEE WHAT WE'RE CREATING!

We want to help you create some coffee magic. Check out our communities to find some coffee hacks and chef-worthy drink recipes. We're always creating something new!

**#iCookCosori**



**@cosoricooks**



**Cosori Appliances**

## MORE COSORI PRODUCTS

If you're happy with this mug and coffee warmer, the line doesn't stop here. Check out [www.cosori.com](http://www.cosori.com) for a line of all our beautiful and thoughtfully designed cookware. They might be right at home in your kitchen, too!

# COSORI

**Questions or Concerns?**

Mon - Fri 9:00 AM - 5:00 PM PT

[support@cosori.com](mailto:support@cosori.com) | (888) 402-1684