

# COSORI

## User Manual

### Double-Wall Stainless Steel Electric Kettle

Model: CDK-SE151-KUS



#### Questions or Concerns?

Mon–Fri, 9:00 am–5:00 pm PST/PDT  
support@cosori.com | (888) 402-1684



# Thank you for your purchase!



(We hope you love your new electric kettle as much as we do.)



*join*

the Cosori Cooks Community on Facebook  
[facebook.com/groups/cosoricooks](https://facebook.com/groups/cosoricooks)



*explore*

our recipe gallery  
[www.cosori.com/recipes](http://www.cosori.com/recipes)



*enjoy*

weekly, featured recipes  
*made exclusively by our in-house chefs*



## CONTACT OUR CHEFS

Our helpful, in-house chefs are ready to assist you with any questions you might have!

**Email:** [recipes@cosori.com](mailto:recipes@cosori.com)

**Toll-Free:** (888) 402-1684

Mon–Fri, 9:00 am–5:00 pm PST/PDT

On behalf of all of us at Cosori,

# Happy cooking!

## Table of Contents

Package Contents	3
Specifications	3
Important Safeguards	4
Getting to Know Your Electric Kettle	6
Before First Use	7
Using Your Electric Kettle	8
Care & Maintenance	9
Warranty Information	10
Customer Support	11

## Package Contents

1 x Double-Wall Stainless Steel Kettle
1 x Power Base
1 x User Manual

## Specifications

<b>Power Supply</b>	AC 120V, 60Hz
<b>Rated Power</b>	1500W
<b>Capacity</b>	1.6 qt / 1.5 L
<b>Dimensions</b>	9.1 x 6.3 x 10.2 in / 23.2 x 15.9 x 25.8 cm
<b>Weight</b>	2.51 lb / 1.14 kg

# READ AND SAVE THESE INSTRUCTIONS

## IMPORTANT SAFEGUARDS

---

Always follow basic safety precautions when using your kettle.

Read all instructions.

### General Safety

- **Caution: Do not** touch hot surfaces. Use handle. **Do not** touch the base or metal walls of the kettle during or immediately after operation.
- **CAUTION: Do not** fill the kettle above the "MAX" line. This may cause water to boil over and may cause scalding.
- **CAUTION: Always** handle with care when there is hot water inside the kettle to avoid scalding.
- Closely supervise children near the kettle. **Do not** allow children to use or play with this kettle.
- Children should not clean or perform maintenance on the kettle without supervision.
- **Do not** immerse the kettle, base, cord, or plug in water or other liquids.
- Unplug the kettle when it is not being used and before cleaning. This will avoid electric shock and prevent moisture from causing a short circuit in the power base while it is plugged in.
- Allow to cool before putting on or taking off parts, and before cleaning.
- **Do not** use the kettle if it is malfunctioning, or if the kettle, base, power cord or plug is damaged in any way. **Do not** try to repair the kettle. Contact **Customer Support** (see page 11).
- Using accessory attachments not recommended by Cosori may result in fire, electric shock, or injury.
- **Only** use the kettle with the base provided. **Do not** use the base for anything other than its intended use.
- **Do not** use outdoors.
- Place the kettle on a dry, flat surface. **Do not** place the kettle on or near heat sources such as stovetops, ovens, radiators, etc.
- **Do not** turn on the kettle while the lid is open.
- **Always** make sure the lid is closed while the kettle is operating. If the lid is lifted during boiling, scalding may occur.
- **Do not** cover the spout opening while the kettle is operating.
- **Do not** cover the slits near the **On/Off Switch**.
- Use caution when refilling or moving the kettle while it is still hot.

- While water is boiling, or just after water has been boiled, avoid contact with steam from the spout.
- **Always** pour boiling water slowly and carefully. Avoid tipping the kettle too quickly.
- To disconnect, use the **On/Off Switch** to turn the kettle off, then remove the plug from the outlet.
- **Only** use the kettle as directed in this manual.
- This kettle is not to be used by persons (including children) with reduced physical, sensory, or mental capacities, or lack of experience and knowledge, unless they have been given supervision or instruction concerning the use of the kettle by a person responsible for their safety.
- Not for commercial use. Household use **only**.

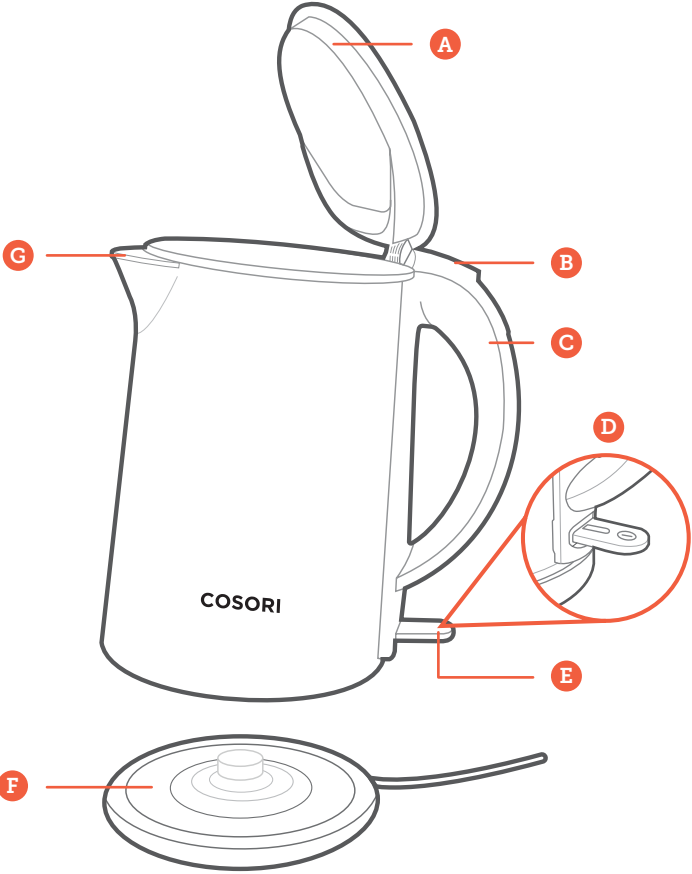
## Power and Cord

- **Do not** let the cord (or any extension cord) hang over the edge of a table or counter where it can be pulled on by children or tripped over. **Do not** allow the cord to touch hot surfaces.
- Your kettle has a polarized plug (one prong is wider than the other), which fits into a polarized outlet only one way. This is a safety feature to reduce the risk of electric shock. If the plug does not fit, reverse the plug. If it still does not fit, **do not** use the plug in that outlet. **Do not** bypass this safety feature.
- This kettle uses a short power-supply cord to reduce the risk of entangling or tripping. Use extension cords with care.
- The marked electrical rating of an extension cord should be at least as high as the rating of the kettle (see page 3).
- If the power supply cord is damaged, it must be replaced by Arovast Corporation or similarly qualified persons in order to avoid an electric or fire hazard. Please contact **Customer Support** (see page 11).
- Your kettle should **only** be used with **120V, 60Hz** electrical systems. **Do not** plug into another type of outlet.

# SAVE THESE INSTRUCTIONS

# GETTING TO KNOW YOUR ELECTRIC KETTLE

---



- A.** Lid
- B.** Lid Release Button
- C.** Handle
- D.** Indicator Light
- E.** On/Off Switch
- F.** Power Base
- G.** Spout

# BEFORE FIRST USE

---

## Water Test

**CAUTION:** Do not use the kettle if it is damaged. Contact **Customer Support** to replace your kettle (see page 11).

Perform the water test before using your kettle to make sure it's working properly.

**Do not** drink the water that is boiled during this initial test.

1. Remove all packaging from your kettle and its accessories, including any temporary stickers.
2. Completely unravel the power cable and place the power base on a flat, level surface.
3. Press the **Lid Release Button** to open the lid. [\[Figure 1.1\]](#)
4. Fill the kettle with water to the "MAX" line, then close the lid. [\[Figure 1.2\]](#) Place the kettle onto the power base. Plug in.
5. Press the **On/Off Switch**. The blue indicator light will turn on. [\[Figure 1.3\]](#)
6. The kettle will automatically turn off once it has finished boiling the water. Allow it to cool for at least 5 minutes, then pour out the water.

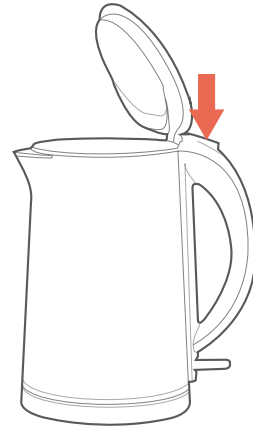


Figure 1.1

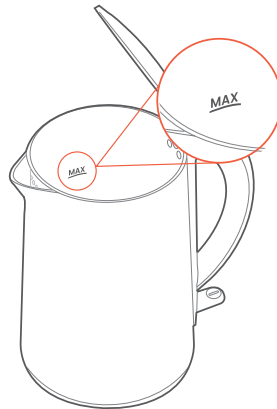


Figure 1.2

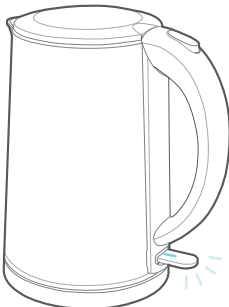


Figure 1.3

# USING YOUR ELECTRIC KETTLE

## Boiling Water

**Do not** boil other liquids in this kettle. This kettle should **only** be used for boiling water.

1. Press the **Lid Release Button** to open the lid.

**Note:** Pressing the button opens the lid to a 45° angle. For filling, manually lift the lid to an 80° angle. [Figure 2.1]

2. Fill the kettle to the desired level. **Do not** fill above the "MAX" line. [Figure 2.2]
3. Close the lid and place the kettle onto the power base. Plug in. [Figure 2.3]
4. Press the **On/Off Switch**. The blue indicator light will turn on. [Figure 2.4]
5. The kettle will automatically turn off once it has finished boiling the water.

**Note:**

- The minimum amount of water needed for boiling is 2.1 US cups / 0.5 L.
- You can stop the heating process by flipping the **On/Off Switch** back up while the kettle is operating.
- This kettle has a dry-run safety feature. If there is no water inside the kettle, it will automatically turn off to prevent the heating plate from overheating.
- If the kettle overheats, fill it with cold water and wait for 2 minutes before using again.

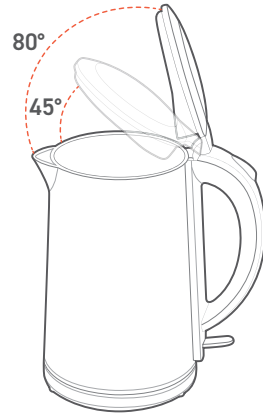


Figure 2.1

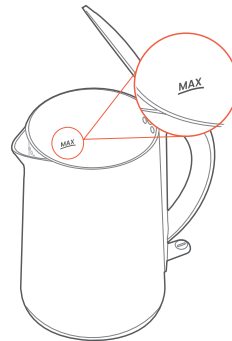


Figure 2.2



Figure 2.3



Figure 2.4



# CARE & MAINTENANCE

---

## Descaling the Kettle

You should descale the kettle at least once a week if you use it frequently. Descaling removes any mineral deposits that have built up inside the kettle. **Always** descale the kettle before and after storing for long periods of time

1. Unplug the kettle and pour out all water. Make sure the kettle is cool.
2. Squeeze half a lemon into the kettle, or add ½ US cup / 118 mL of distilled vinegar into the kettle.
3. If the kettle has thick scale buildup, scrub the kettle's inner walls with a non-scratch scrub sponge.

**Note:** **Do not** use steel wool, as this can scratch the kettle.

4. Add 2 US cups / 473 mL of water. Boil the mixture.
5. Pour out the mixture, then wipe off any remaining scale with a non-abrasive cloth, sponge, or cleaning brush.
6. Repeat as needed.

**Note:** For quick descaling, add 3 US tbsp / 44 mL of baking soda to ½ US cup / 118 mL of vinegar into the kettle. Swirl the mixture around until it coats the walls of the kettle, wipe with a non-scratch sponge, and pour the mixture out. This method will **only** work for a thin layer of scale.

## Cleaning

1. Unplug the kettle and allow it to cool before cleaning.
2. Wipe the kettle and base with a soft, damp cloth. Make sure that the electric socket on the underside of the kettle is kept dry.
3. Dry all parts after every use.

**Note:** **Never** immerse kettle or power base in water.

# WARRANTY INFORMATION

---

<b>Product</b>	<i>Double-Wall Stainless Steel Electric Kettle</i>
<b>Models</b>	<i>CDK-SE151-KUS</i>
For your own reference, we strongly recommend that you record your order ID and date of purchase.	
<b>Order ID</b>	
<b>Date of Purchase</b>	

## TERMS & POLICY

Arovast Corporation ("Arovast") warrants this product to the original purchaser to be free from defects in material and workmanship, under normal use and conditions, for a period of 2 years from the date of original purchase.

Arovast agrees, at our option during the warranty period, to repair any defect in material or workmanship or furnish an equal product in exchange without charge, subject to verification of the defect or malfunction and proof of the date of purchase.

There is no other express warranty. This warranty does not apply:

- If the product has been modified from its original condition;
- If the product has not been used in accordance with directions and instructions in the user manual;
- To damages or defects caused by accident, abuse, misuse or improper or inadequate maintenance;
- To damages or defects caused by service or repair of the product performed by an unauthorized service provider or by anyone other than Arovast;
- To damages or defects occurring during commercial use, rental use, or any use for which the product is not intended;
- To damages or defects exceeding the cost of the product.

Arovast will not be liable for indirect, incidental, or consequential damages in connection with the use of the product covered by this warranty.

This warranty extends only to the original consumer purchaser of the product and is not transferable to any subsequent owner of the product regardless of whether the product is transferred during the specified term of the warranty.

This warranty does not extend to products purchased from unauthorized sellers. Arovast's warranty extends only to products purchased from authorized sellers that are subject to Arovast's quality controls and have agreed to follow its quality controls.

All implied warranties are limited to the period of this limited warranty.

This warranty gives you specific legal rights and you may also have other rights which vary from state to state. Some states do not allow the exclusion or limitation of incidental or consequential damages, so the above limitation or exclusion may not apply to you.

If you discover that your product is defective within the specified warranty period, please contact Customer Support via **support@cosori.com**. **DO NOT** dispose of your product before contacting us. Once our Customer Support Team has approved your request, please return the product with a copy of the invoice and order ID.

Every Cosori product automatically includes a 2-year warranty. To make the customer support process quick and easy, register your product online at **www.cosori.com/warranty**.

This warranty is made by:

Arovast Corporation  
1202 N. Miller St., Suite A  
Anaheim, CA 92806

# CUSTOMER SUPPORT

---

If you have any questions or concerns about your new product, please contact our helpful Customer Support Team.

## **Arovast Corporation**

1202 N. Miller St., Suite A  
Anaheim, CA 92806

**Email:** [support@cosori.com](mailto:support@cosori.com)

**Toll-Free:** (888) 402-1684

## **Support Hours**

Mon–Fri, 9:00 am–5:00 pm PST/PDT

*\* Please have your invoice and order ID ready before contacting Customer Support.*

# SHOW US WHAT YOU'RE MAKING

---

We hope this has been helpful to you. We can't wait to see your beautiful results, and we think you'll want to share glam shots! Our community awaits your uploads—just pick your platform of choice below. Snap, tag, and hashtag away, Cosori chef!

## **#LiveLifeTastefully #iCookCosori**

**@CosoriCooks**

**@Cosori**



# MORE COSORI RECIPES

---

Considering *what* to cook? Many recipe ideas are available, both from us and the Cosori community.

# COSORI

**Questions or Concerns?**

Mon–Fri, 9:00 am–5:00 pm PST/PDT  
support@cosori.com | (888) 402-1684