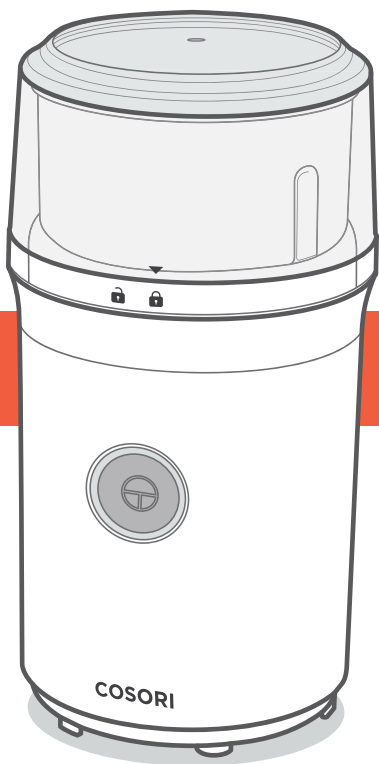


# COSORI®

## User Manual

### Pulse 2-in-1 Coffee Grinder



#### Questions or Concerns?

Mon–Fri, 9:00 am–5:00 pm PST/PDT  
support@cosori.com | (888) 402-1684

 *Thank you for  
your purchase!* 

(We hope you love your new coffee grinder as much as we do)



*join*

the Cosori Cooks Community on Facebook  
[facebook.com/groups/cosoricooks](https://www.facebook.com/groups/cosoricooks)



*explore*

our recipe gallery  
[www.cosori.com/recipes](https://www.cosori.com/recipes)



*enjoy*

weekly, featured recipes  
*made exclusively by our in-house chefs*



## CONTACT OUR CHEFS

Our helpful, in-house chefs are ready to assist you with any questions you might have!

**Email:** [recipes@cosori.com](mailto:recipes@cosori.com)

**Toll-Free:** (888) 402-1684

M-F, 9:00 am–5:00 pm PST/PDT

On behalf of all of us at Cosori,

*Happy cooking!*

## Table of Contents

Package Contents	3
Specifications	3
Important Safeguards	4
Getting to Know Your Coffee Grinder	6
Before First Use	7
Grinding Coffee	7
Care & Maintenance	9
Troubleshooting	9
Warranty Information	11
Customer Support	12

## Package Contents

- 1 × Pulse 2-in-1 Coffee Grinder
- 1 × Single-Blade Grinding Chamber
- 1 × Double-Blade Grinding Chamber
- 1 × Grinder Lid
- 2 × Chamber Cover
- 1 × Cleaning Brush
- 1 × User Manual
- 1 × Quick Reference Guide

## Specifications

<b>Model</b>	CCG-U021-KUS
<b>Power Supply</b>	AC 120V, 60Hz
<b>Rated Power</b>	200W
<b>Capacity</b>	2.5 oz / 70 g
<b>Weight</b>	1.85 lb / 840 g
<b>Dimensions</b>	4 × 4 × 7.6 in / 102 × 102 × 193.5 mm

Download the free VeSync app to access original recipes and video tutorials from the Cosori chefs, interact with our online community, and more!



# READ AND SAVE THESE INSTRUCTIONS

## IMPORTANT SAFEGUARDS

---

Follow basic safety precautions when using your coffee grinder. Read all instructions.

### General Safety

- To protect against electric shock, **do not immerse the coffee grinder** housing, cord, or plug in water or liquid.
- This coffee grinder was designed to process normal household quantities.
- The coffee grinder should not be used by children. Keep the coffee grinder and its cord out of reach of children.
- Avoid contact with moving parts. **Do not** attempt to defeat any safety interlock mechanisms.
- Keep hands and utensils out of the coffee grinder while grinding to reduce the risk of severe injury to persons or damage to the coffee grinder. A scraper may be used but must be used only when the coffee grinder is not running.
- Blades are sharp. Handle carefully.
- **Never** remove the transparent lid before the blades have stopped rotating.
- Turn the coffee grinder off, then unplug the coffee grinder from the outlet when not in use, before putting on or taking off parts, and before cleaning. To unplug, grasp the plug and pull from the outlet. **Never** pull from the power cord.
- This coffee grinder is not to be used by persons (including children) with reduced physical, sensory or mental capabilities, or lack of experience and knowledge, unless they have been given supervision or instruction concerning use of the coffee grinder by a person responsible for their safety.
- Close supervision is necessary when the coffee grinder is used by or near children.

## Important Safeguards (CONT.)

- Children should be supervised to ensure that they **do not** play with the coffee grinder.
- **Do not** allow children to clean or perform maintenance on the coffee grinder unless they are supervised.
- The use of attachments not recommended or sold by Cosori may cause fire, electric shock, or injury.
- **Always** check the grinding chamber for foreign objects before using.
- **Do not** operate the coffee grinder with an empty grinding chamber.
- The coffee grinder should be thoroughly cleaned after each use and before storing.
- **Caution:** Allow the coffee grinder to rest for 1 minute after 30 seconds of continuous use.
- Do not use your coffee grinder if it is damaged, not working, or if the cord or plug is damaged. Please contact **Customer Support** (see page 12).
- Not for outdoor or commercial use. Household use **only**.

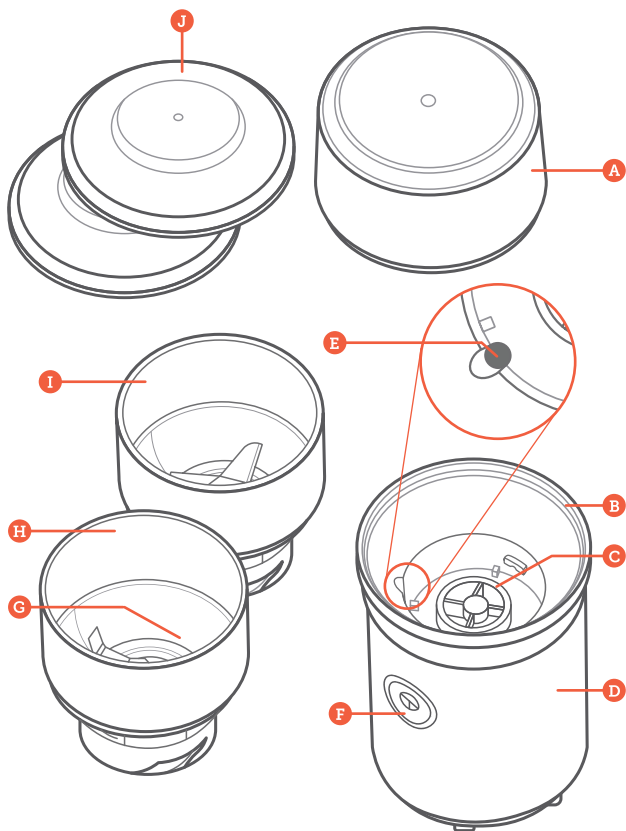
## Power Cord

- **Do not** let cord hang over edge of table or counter.
- This coffee grinder has a polarized plug (one blade is wider than the other). To reduce the risk of electric shock, this plug will fit in a polarized outlet only one way. If the plug does not fit fully in the outlet, reverse the plug. **Do not** modify the plug in any way.
- Your coffee grinder should **only** be used with **120V, 60Hz** electrical systems. **Do not** plug into another type of outlet.
- Longer extension cords are available and may be used if care is exercised in their use. If a longer extension cord is used:
  - The marked electrical rating of the extension cord should be at least as great as the electrical rating of the coffee grinder.
  - The cord should be arranged so that it will not drape over the countertop or tabletop where it can be pulled on by children or tripped over unintentionally.

**SAVE THESE INSTRUCTIONS**

# GETTING TO KNOW YOUR COFFEE GRINDER

---



- A.** Grinder Lid
- B.** Upper Body
- C.** Clutch
- D.** Base
- E.** Drain
- F.** On/Off Button
- G.** Stainless Steel Blade
- H.** Single-Blade Grinding Chamber
- I.** Double-Blade Grinding Chamber
- J.** Chamber Covers

# BEFORE FIRST USE

---

## Setting Up

1. Remove all plastic and labels from all parts of the coffee grinder.
2. Place the coffee grinder on a hard, flat surface.
3. Plug in the coffee grinder.

# GRINDING COFFEE

---

1. Insert the grinding chamber into the base. Twist to lock into place.
2. Measure out the desired amount of whole coffee beans and place them in the grinding chamber.

**Note:** *Do not fill the grinding chamber past the MAX fill line.*

3. Place the grinder lid on top of the grinding chamber, aligning the marker on the lid with the unlock symbol on the chamber. Twist clockwise to lock into place.
4. Press and hold the **ON/OFF** button until the coffee grounds reach the desired grind size.

**Note:**

- *The drain inside the base allows the remaining grounds and liquid to trickle out.*
- *Grinding coffee beans for a longer duration of time will result in finer grounds. Grinding for a shorter duration of time will result in coarser grounds.*
- *During grinding, if coffee grounds start collecting on the edge of the grinding chamber, gently shake the coffee grinder so that the coffee grounds fall back inside.*
- *To prevent overheating, allow the coffee grinder to rest for 1 minute after 30 seconds of continuous use.*

Please refer to the **Coffee Grinding Chart** below for guidance on choosing a grind size for your preferred brewing method.

## Coffee Grinding Chart

Duration	Grind Size	Brewing Methods
8–10 seconds	Coarse	French Press, Cold Brew
10–12 seconds	Medium	Pour Over, Drip
12–15 seconds	Fine	Espresso, Moka Pot

# GRINDING FOOD

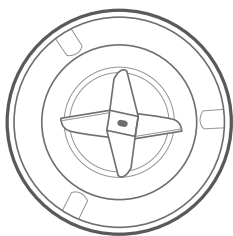
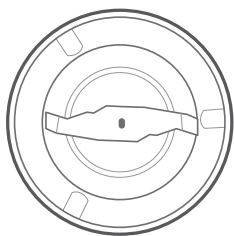
The coffee grinder is also suitable for fresh or larger-sized foods like nuts, onions, and peppers.

**Note:**

- The drain inside the base allows the remaining grounds and liquid to trickle out.
- **Do not** add extra liquid or oil to food in the grinding chamber.
- **Do not** fill ingredients like flax seeds, chia seeds, and sesame seeds to more than half of the MAX line of the grinding chamber.

Please refer to the **Food Grinding Chart** below for guidance on choosing foods for your grinder type.

## Food Grinding Chart



2 Blades	
Dried Coffee Beans	
Dried Spices	
Salt	
Dried Pepper	

4 Blades	
Nuts	
Onion	
Garlic	
Pepper	



# CARE & MAINTENANCE

---

## Cleaning the Coffee Grinder

The coffee grinder should be thoroughly cleaned after each use and before storing.

1. Unplug the coffee grinder.
2. Wash the grinding chambers, grinder lid, and chamber covers by hand or in the dishwasher.

**Note:** If using a dishwasher, place the grinding chambers, grinder lid, and chamber covers on the top rack.

3. If cleaning by hand, carefully clean the blade area of the grinding chamber with the included cleaning brush.
4. Wipe the outside of the coffee grinder with a damp cloth.
5. Dry all parts with a cloth. Make sure all parts are completely dry before reassembling or storing.

## Storage

Follow the cleaning instructions above and allow all parts to dry completely before storing. Store in a cool, dry location with both grinding chambers covered with the chamber covers.

# TROUBLESHOOTING

---

Problem	Possible Solution
<b>The coffee grinder will not turn on.</b>	Make sure the plug is connected to a power outlet.
	Make sure the grinder lid is locked into place (see page 7).
<b>The coffee grinder has stopped working.</b>	The heat sensor was triggered by the motor overheating. Unplug the coffee grinder and allow it to cool for 30 minutes before using it again.
<b>Coffee grounds are getting stuck and not circulating during grinding.</b>	Stop grinding and gently shake the coffee grinder up and down to redistribute the grounds.
<b>Coffee grounds are being ground too finely.</b>	Hold the <b>ON/OFF</b> button down for a shorter period of time for a coarser grind size.
<b>The grind sizes are inconsistent.</b>	Hold the <b>ON/OFF</b> button consistently without letting go for consistent grind sizes.

If your problem is not listed, please contact **Customer Support** (see page 12).

# FEDERAL COMMUNICATION COMMISSION INTERFERENCE STATEMENT - PART 15

---

This device complies with Part 15 of the FCC Rules. Operation is subject to the following two conditions:

- [1] This device may not cause harmful interference, and
- [2] This device must accept any interference received, including interference that may cause undesired operation.

NOTE: This equipment has been tested and found to comply with the limits for a Class B digital device, pursuant to Part 15 of the FCC Rules. These limits are designed to provide reasonable protection against harmful interference in a residential installation. This equipment generates, uses and can radiate radio frequency energy and, if not installed and used in accordance with the instructions, may cause harmful interference to radio communications. However, there is no guarantee that interference will not occur in a particular installation. If this equipment does cause harmful interference to radio or television reception, which can be determined by turning the equipment off and on, the user is encouraged to try to correct the interference by one or more of the following measures:

- Reorient or relocate the receiving antenna.
- Increase the separation between the equipment and receiver.
- Connect the equipment into an outlet on a circuit different from that to which the receiver is connected.
- Consult the dealer or an experienced radio/TV technician for help.

**FCC Caution:** Any changes or modifications not expressly approved by the party responsible for compliance could void the user's authority to operate this equipment.

# WARRANTY INFORMATION

<b>Product</b>	<i>Pulse 2-in-1 Coffee Grinder</i>
<b>Model</b>	<i>CCG-U021-KUS</i>
For your own reference, we strongly recommend that you record your order ID and date of purchase.	
<b>Order ID</b>	
<b>Date of Purchase</b>	

## TERMS & POLICY

Arovast Corporation ("Arovast") warrants this product to the original purchaser to be free from defects in material and workmanship, under normal use and conditions, for a period of 2 years from the date of original purchase.

Arovast agrees, at our option during the warranty period, to repair any defect in material or workmanship or furnish an equal product in exchange without charge, subject to verification of the defect or malfunction and proof of the date of purchase.

There is no other express warranty. This warranty does not apply:

- If the product has been modified from its original condition;
- If the product has not been used in accordance with directions and instructions in the user manual;
- To damages or defects caused by accident, abuse, misuse or improper or inadequate maintenance;
- To damages or defects caused by service or repair of the product performed by an unauthorized service provider or by anyone other than Arovast;
- To damages or defects occurring during commercial use, rental use, or any use for which the product is not intended;
- To damages or defects exceeding the cost of the product.

Arovast will not be liable for indirect, incidental, or consequential damages in connection with the use of the product covered by this warranty.

This warranty extends only to the original consumer purchaser of the product and is not transferable to any subsequent owner of the product regardless of whether the product is transferred during the specified term of the warranty.

This warranty does not extend to products purchased from unauthorized sellers. Arovast's warranty extends only to products purchased from authorized sellers that are subject to Arovast's quality controls and have agreed to follow its quality controls.

All implied warranties are limited to the period of this limited warranty.

This warranty gives you specific legal rights and you may also have other rights which vary from state to state. Some states do not allow the exclusion or limitation of incidental or consequential damages, so the above limitation or exclusion may not apply to you.

If you discover that your product is defective within the specified warranty period, please contact Customer Support via [support@cosori.com](mailto:support@cosori.com). **DO NOT** dispose of your product before contacting us. Once our Customer Support Team has approved your request, please return the product with a copy of the invoice and order ID.

Every Cosori product automatically includes a 2-year warranty. To make the customer support process quick and easy, register your product online at [www.cosori.com/warranty](http://www.cosori.com/warranty)

This warranty is made by:

Arovast Corporation  
1202 N. Miller St., Suite A  
Anaheim, CA 92806

# CUSTOMER SUPPORT

---

If you have any questions or concerns about your new product, please contact our helpful Customer Support Team.

**Arovast Corporation**

1202 N. Miller St., Suite A  
Anaheim, CA 92806

**Support Hours**

Mon–Fri, 9:00 am–5:00 pm  
PST/PDT

**Email:** [support@cosori.com](mailto:support@cosori.com)

**Toll-Free:** (888) 402-1684

\*Please have your order invoice and order ID ready before contacting Customer Support.



# NOTES

---

---

---

---

---

---

---

---

---

---

---

---

---

---

---

---

## SHOW US WHAT YOU'RE MAKING

---

We hope this manual has been helpful. We can't wait to see your beautiful results, and we think you'll want to share glam shots! Our community awaits your uploads—just pick your platform of choice below. Snap, tag, and hashtag away, Cosori chef!

Considering what to cook? Many recipe ideas are available, both from us and the Cosori community.

**#LiveLifeTastefully #iCookCosori**

**@CosoriCooks**



**@Cosori**



# COSORI®

## **Questions or Concerns?**

support@cosori.com | (888) 402-1684  
Mon–Fri, 9:00 am–5:00 pm PST/PDT